

## 8105.182 Master N 3~

Grindex drainage pumps are designed for professional use in tough applications like mines, construction sites, tunnel sites and other demanding industries. They are designed for pumping water that may contain solids

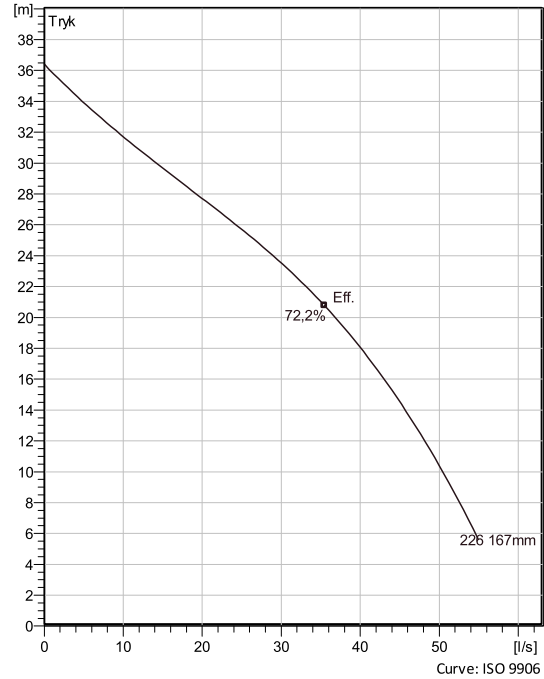
– up to the size of the strainer holes. Grindex drainage pumps are designed for continuous, unattended operation. They have proven their reliability and dependable performance in demanding areas like building and construction, mining, tunnelling, quarries, industries and rental applications.



### Teknisk specifikation



Curves according to: Vand, rent [100%], 4 °C, 1 kg/dm<sup>3</sup>, 1,569 mm<sup>2</sup>/s



### Konfiguration

<b>Motor number</b> B8105.182 18-15-2BB-W 10KW	<b>Installation</b> S - Transportabel semi permanent, dykket
<b>Impeller diameter</b> 167 mm	<b>Discharge diameter</b> 150 mm

### Pump information

<b>Impeller diameter</b> 167 mm
<b>Discharge diameter</b> 150 mm
<b>Inlet diameter</b>
<b>Maximum operating speed</b> 2865 1/min
<b>Number of blades</b> 4

### Materials

<b>Pumpehjul</b> Hard-Iron™
<b>Stator housing material</b> Aluminium

Projekt Xylect-20774020  
Blok

Udført af Michael Jersborg Opdateret 6/27/2023  
Oprettet 6/27/2023

# 8105.182 Master N 3~

## Teknisk specifikation



### Motor - General

<b>Motor number</b> B8105.182 18-15-2BB-W 10KW	<b>Faser</b> 3~	<b>Rated speed</b> 2865 1/min	<b>Mærkeeffekt</b> 10 kW
<b>Godkendelse</b> No	<b>Antal poler</b> 2	<b>Mærkestrøm</b> 19 A	<b>Stator variant</b> 16
<b>Frekvens</b> 50 Hz	<b>Mærkespænding</b> 400 V	<b>Isoleringsklasse</b> H	<b>Driftstype</b> S1

### Motor - Technical

<b>Motor cos phi - 1/1 Load</b> 0,88	<b>Motor efficiency - 1/1 Load</b> 85,7 %	<b>Total inertimoment</b> 0,0232 kg m <sup>2</sup>	<b>Max. starter pr. time</b> 30
<b>Motor cos phi - 3/4 Load</b> 0,84	<b>Motor efficiency - 3/4 Load</b> 87,6 %	<b>Startstrøm, direkte start</b> 115 A	
<b>Motor cos phi - 1/2 Load</b> 0,74	<b>Motor efficiency - 1/2 Load</b> 88,1 %	<b>Startstrøm, stjerne-trekant</b> 38,3 A	

**Projekt** Xylect-20774020  
**Blok**

**Udført af** Michael Jersborg  
**Oprettet** 6/27/2023  
**Opdateret** 6/27/2023

# 8105.182 Master N 3~

Performance curve

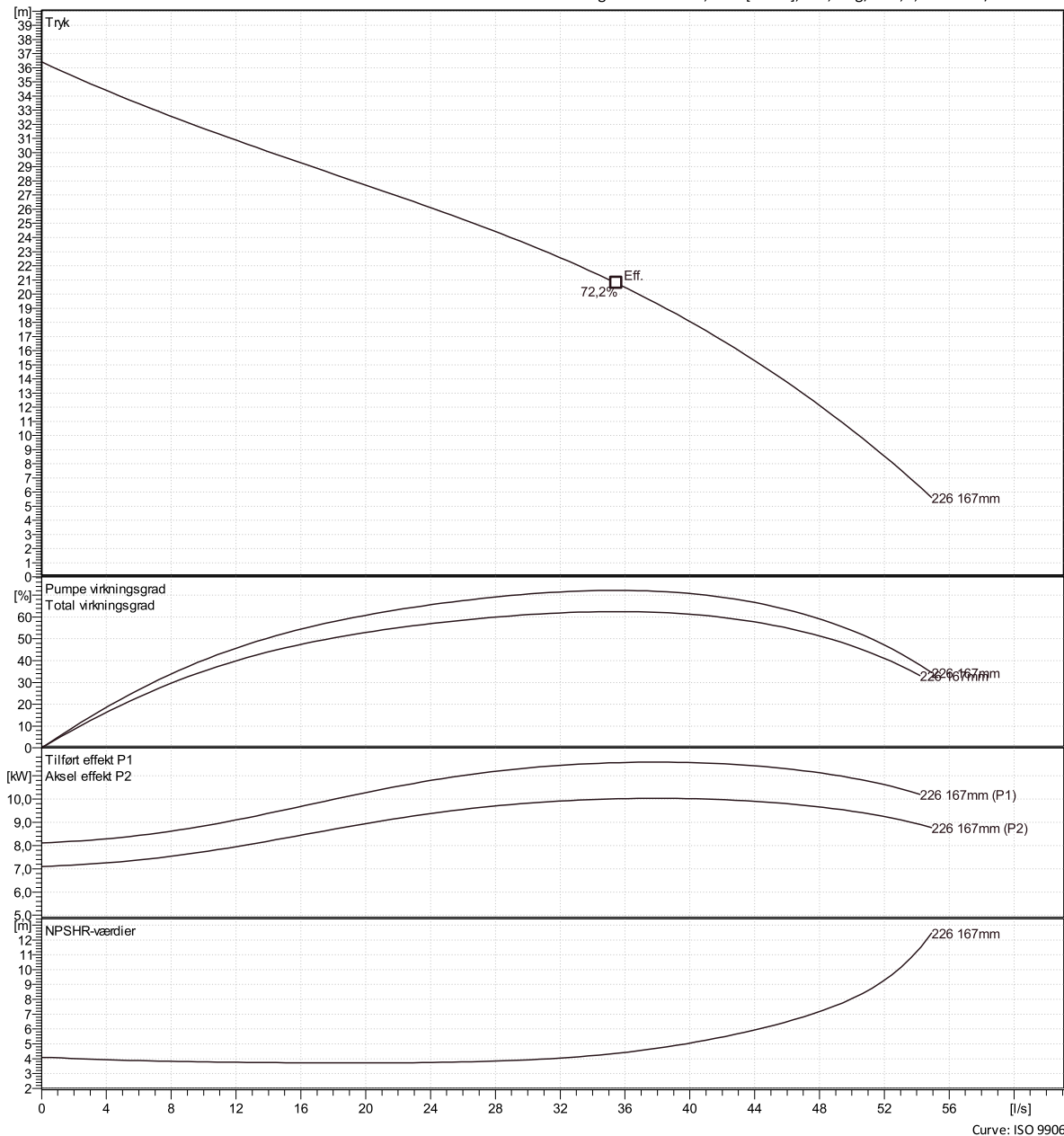


## Duty point

Flow

Tryk

Curves according to: Vand, rent [100%], 4 °C, 1 kg/dm<sup>3</sup>, 1,569 mm<sup>2</sup>/s



Curve: ISO 9906

Projekt Xylect-20774020  
Blokk

Udført af Michael Jersborg  
Oprettet 6/27/2023

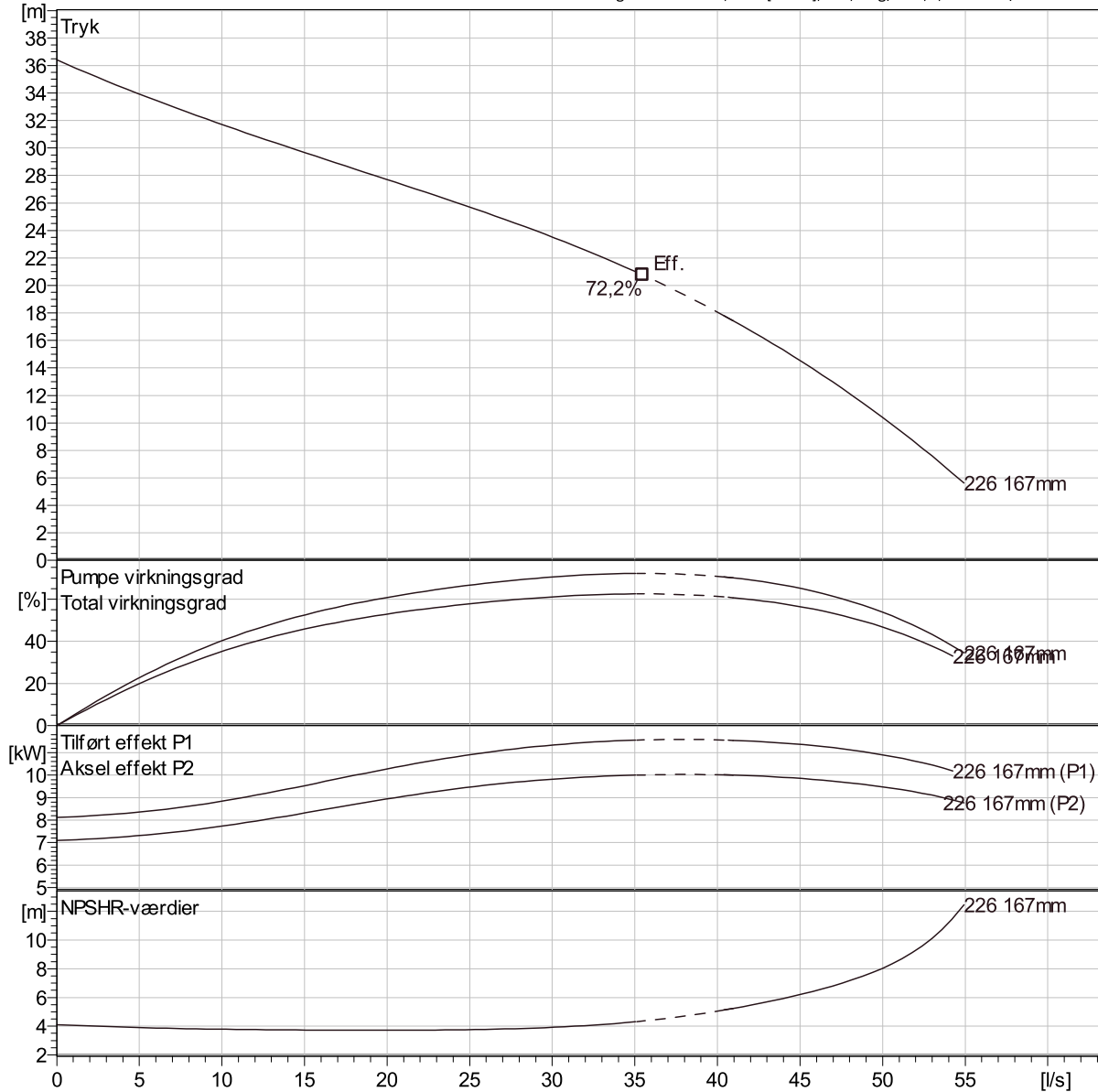
Opdateret 6/27/2023

# 8105.182 Master N 3~

## Duty Analysis



Curves according to: Vand, rent [100%], 4 °C, 1 kg/dm<sup>3</sup>, 1,569 mm<sup>2</sup>/s



Curve: ISO 9906

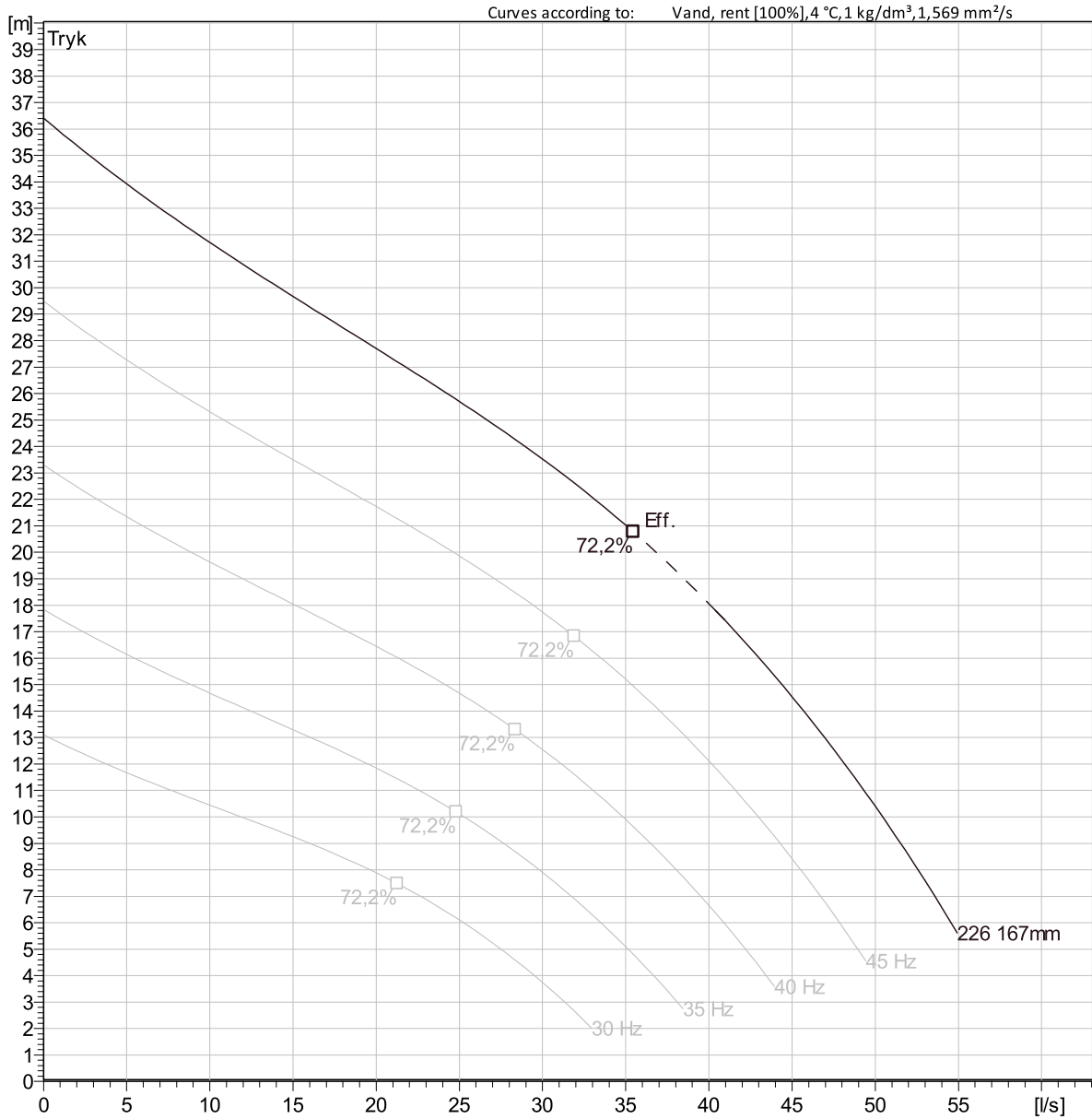
### Operating characteristics

Pumps/Systems	Flow	Tryk	Akselkraft	Flow	Tryk	Akselkraft	Hydr.eff.	Specifik energi	NPSHR
---------------	------	------	------------	------	------	------------	-----------	-----------------	-------

Projekt	Xylect-20774020	Udført af	Michael Jersborg	Opdateret	6/27/2023
Blok		Oprettet	6/27/2023		

# 8105.182 Master N 3~

## VFD Analysis



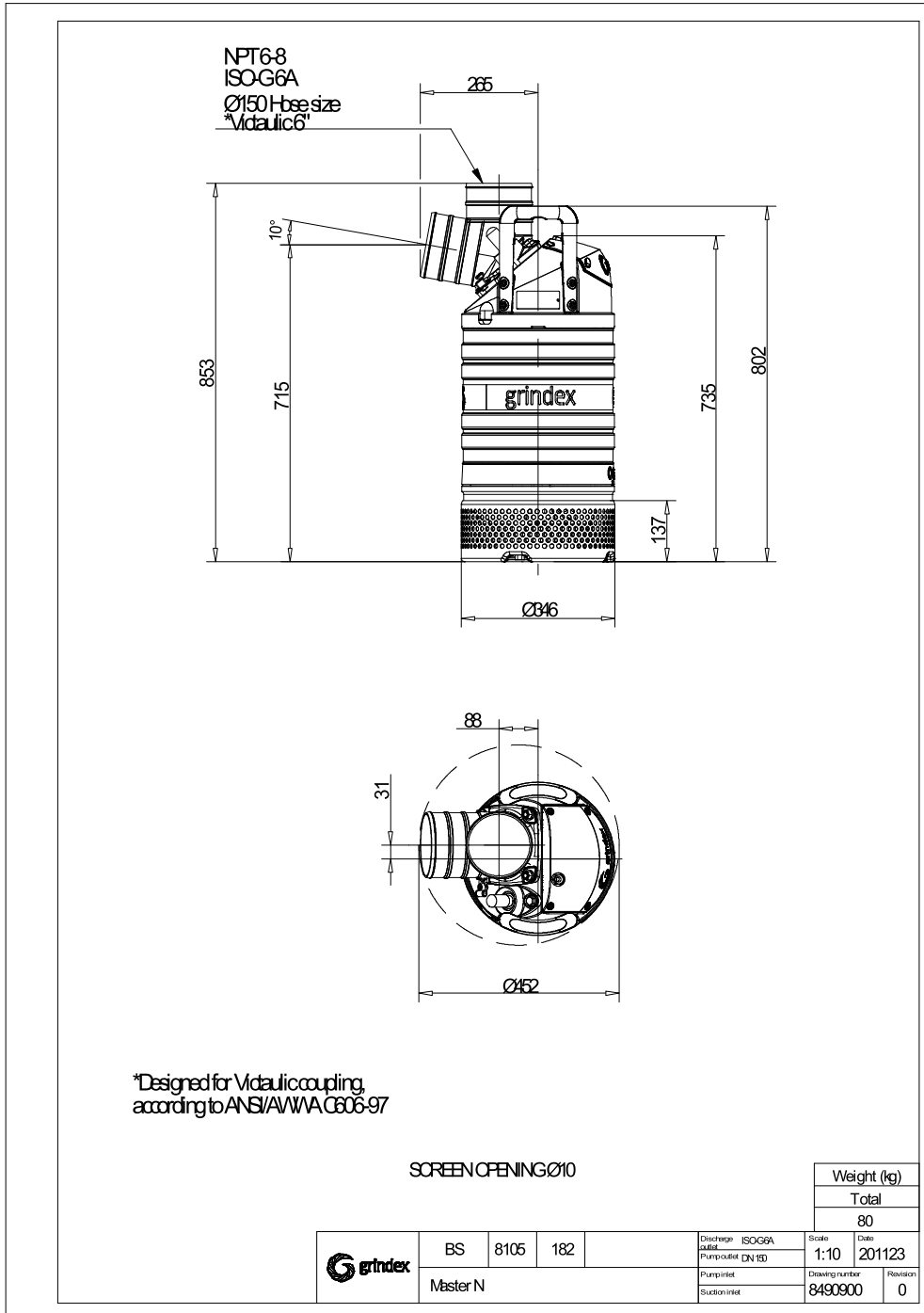
Curve: ISO 9906

### Operating Characteristics

Pumps/Syste ms	Frekvens	Flow	Tryk	Akselkraft	Flow	Tryk	Akselkraft	Hydr.eff.	Specifik energi	NPSHr
Projekt	Xylect-20774020				Udført af	Michael Jersborg	Opdateret	6/27/2023		
Blok					Oprettet	6/27/2023				

# 8105.182 Master N 3~

Dimensions tegning



Projekt	Xylect-20774020	Udført af	Michael Jersborg	Opdateret	6/27/2023
Blok		Oprettet	6/27/2023		