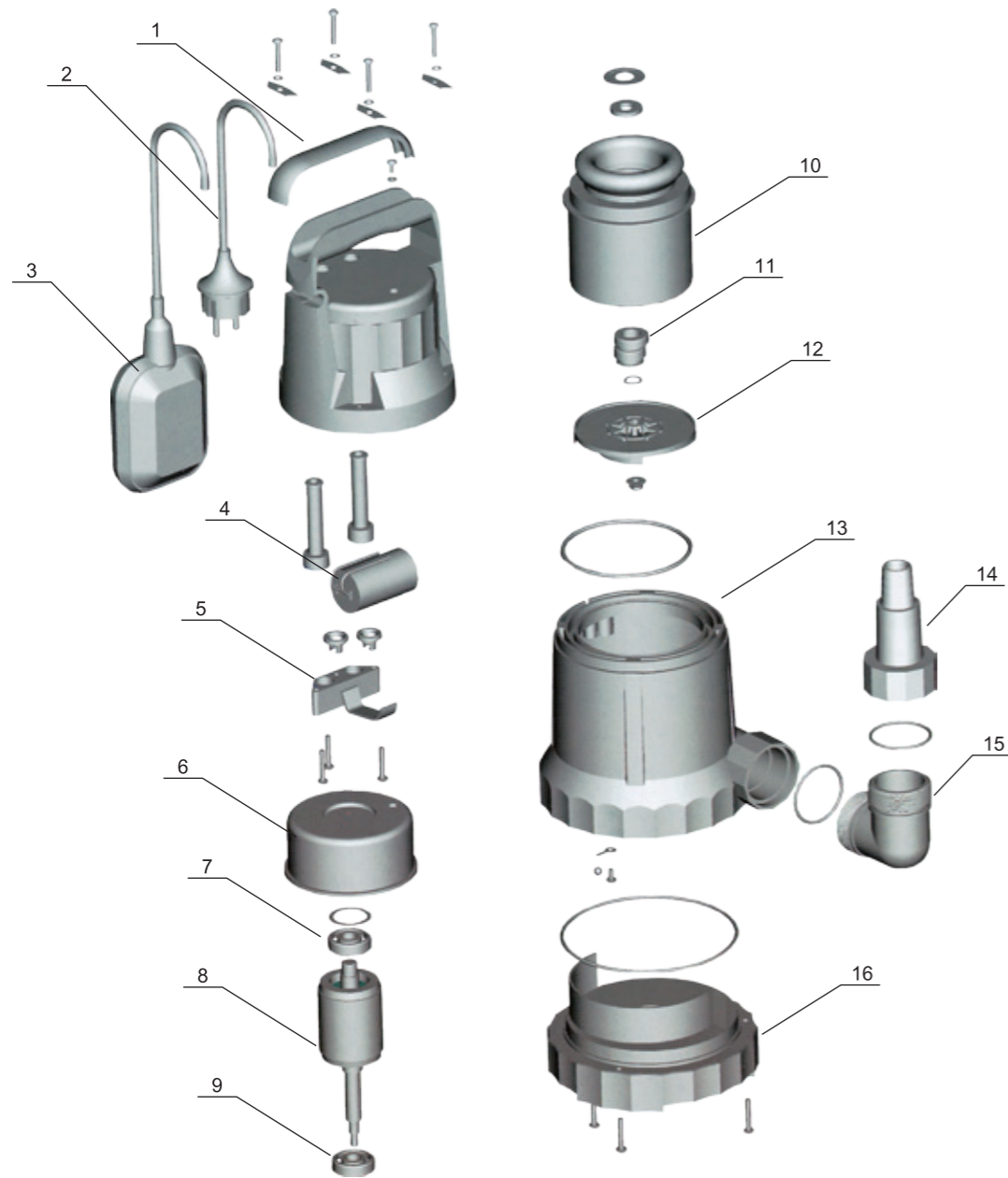


Diagram

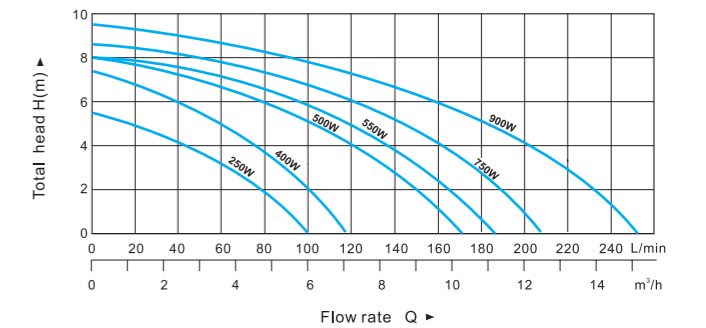


| NO. | DESCRIPTION  | NO. | DESCRIPTION       |
|-----|--------------|-----|-------------------|
| 1   | Handle Grip  | 9   | Ball Bearing      |
| 2   | Plug & Cable | 10  | Motor Stator      |
| 3   | Float Switch | 11  | Mechanical Seal   |
| 4   | Capacitor    | 12  | Impeller          |
| 5   | Wire Clip    | 13  | Pump Housing      |
| 6   | Upper Lid    | 14  | Universal Fitting |
| 7   | Ball Bearing | 15  | Connector         |
| 8   | Rotor Shaft  | 16  | Pump Base         |

Features:

- Max Dia. of particle: 5mm
- Max immersion depth: 5m
- Insulation class: B

PERFORMANCE CHART AT n=2900 r/min



CSP-XX0P



CSP-XX1P

| MODEL               | POWER P1(W) | MAX.FLOW (L/min) | MAX.HEAD (m) | DIA.OF PIPE  | CABLE                        | G.W (kg) | PACKING DIMENSION/UNIT (mm) | QTY/20' GP (UNIT) |
|---------------------|-------------|------------------|--------------|--------------|------------------------------|----------|-----------------------------|-------------------|
| CSP-250P / CSP-251P | 250         | 100              | 5.5          | 1", 1¼", 1½" | H05RN-F3G0.75mm <sup>2</sup> | 16       | 460x340x330/4pcs            | 2300              |
| CSP-400P / CSP-401P | 400         | 118              | 7.5          |              | H05RN-F3G0.75mm <sup>2</sup> | 17       | 460x340x330/4pcs            | 2300              |
| CSP-500P / CSP-501P | 500         | 168              | 8            |              | H05RN-F3G0.75mm <sup>2</sup> | 21       | 460x340x350/4pcs            | 2300              |
| CSP-550P / CSP-551P | 550         | 185              | 8            |              | H05RN-F3G0.75mm <sup>2</sup> | 21       | 460x340x350/4pcs            | 2040              |
| CSP-750P / CSP-751P | 750         | 210              | 8.5          |              | H05RN-F3G1.0mm <sup>2</sup>  | 22       | 460x340x350/4pcs            | 2040              |
| CSP-900P / CSP-901P | 900         | 250              | 9.5          |              | H05RN-F3G1.0mm <sup>2</sup>  | 24       | 460x340x350/4pcs            | 2040              |