

8101.172 Minex Lite 3~

Grindex drainage pumps are designed for professional use in tough applications like mines, construction sites, tunnel sites and other demanding industries. They are designed for pumping water that may contain solids

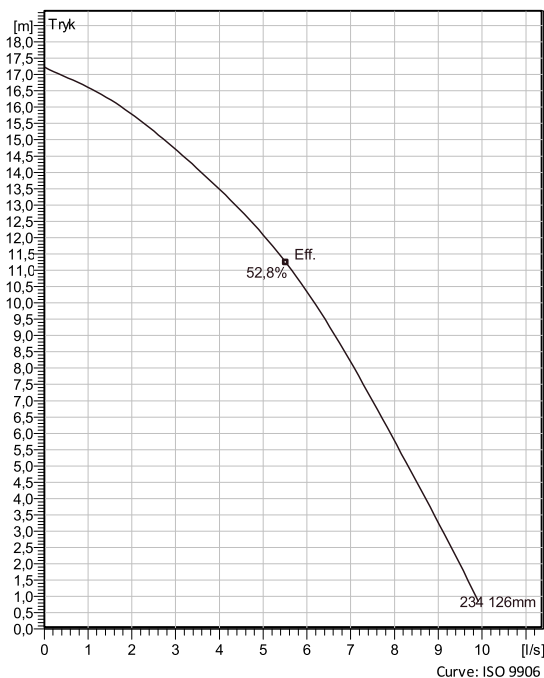
– up to the size of the strainer holes. Grindex drainage pumps are designed for continuous, unattended operation. They have proven their reliability and dependable performance in demanding areas like building and construction, mining, tunnelling, quarries, industries and rental applications.



Teknisk specifikation



Curves according to: Vand, rent [100%], 4 °C, 1 kg/dm³, 1,569 mm²/s



Konfiguration

Motor number
K8101.172 13-06-2BB-W
1.2KW

Impeller diameter
126 mm

Installation
S - Transportabel semi
permanent, dykket

Discharge diameter
50 mm

Pump information

Impeller diameter
126 mm

Discharge diameter
50 mm

Inlet diameter

Maximum operating speed
2715 1/min

Number of blades
2

Materials

Pumpehjul
Hard-Iron™

Projekt Xylect-20776517
Blok

Udført af Michael Jersborg **Opdateret** 6/27/2023
Oprettet 6/27/2023

8101.172 Minex Lite 3~

Teknisk specifikation



Motor - General

Motor number K8101.172 13-06-2BB-W 1.2KW	Faser 3~	Rated speed 2715 1/min	Mærkeeffekt 1,2 kW
Godkendelse No	Antal poler 2	Mærkestrøm 2,6 A	Stator variant 8
Frekvens 50 Hz	Mærkespænding 400 V	Isoleringsklasse F	Driftstype S1

Motor - Technical

Motor cos phi - 1/1 Load 0,87	Motor efficiency - 1/1 Load 75,1 %	Total inertimoment 0,0028 kg m ²	Max. starter pr. time 15
Motor cos phi - 3/4 Load 0,82	Motor efficiency - 3/4 Load 78,8 %	Startstrøm, direkte start 12 A	
Motor cos phi - 1/2 Load 0,70	Motor efficiency - 1/2 Load 79,8 %	Startstrøm, stjerne-trekant 4 A	

Projekt Xylect-20776517
Blok

Udført af Michael Jersborg
Oprettet 6/27/2023
Opdateret 6/27/2023

8101.172 Minex Lite 3~

Performance curve

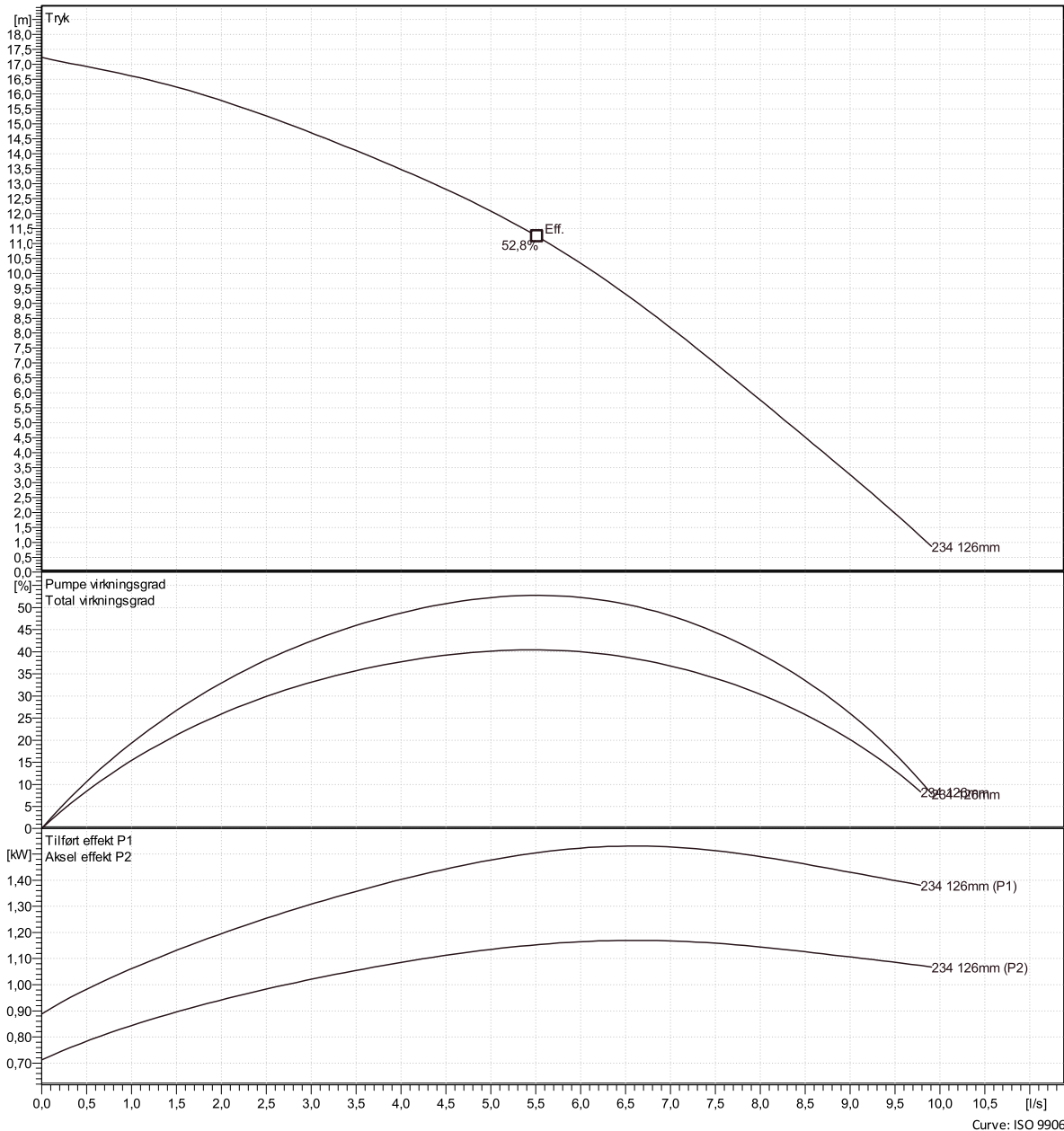


Duty point

Flow

Tryk

Curves according to: Vand, rent [100%], 4 °C, 1 kg/dm³, 1,569 mm²/s



Projekt Xylect-20776517
Blok

Udført af Michael Jersborg
Oprettet 6/27/2023

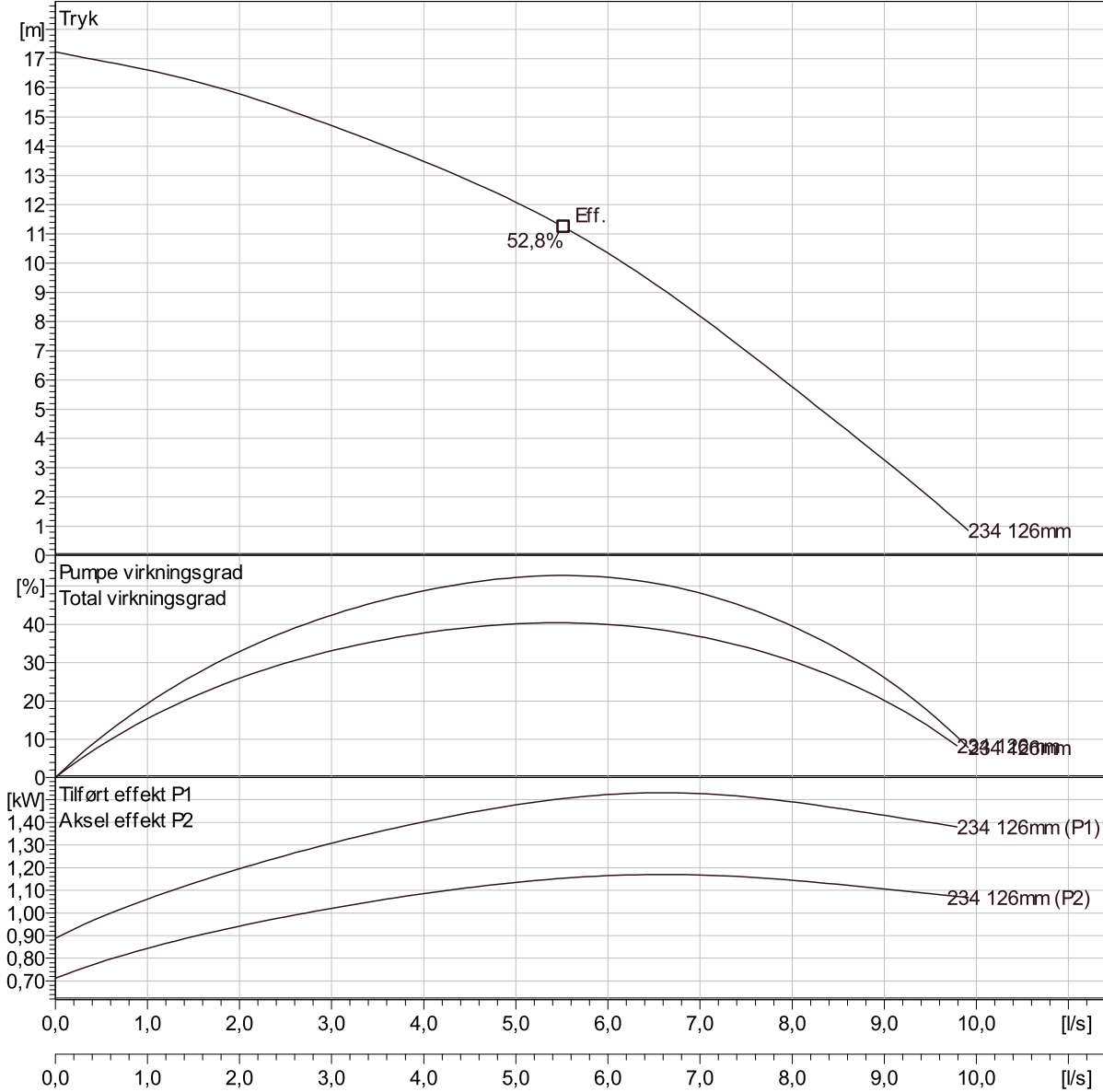
Opdateret 6/27/2023

8101.172 Minex Lite 3~

Duty Analysis



Curves according to: Vand, rent [100%], 4 °C, 1 kg/dm³, 1,569 mm²/s



Curve: ISO 9906

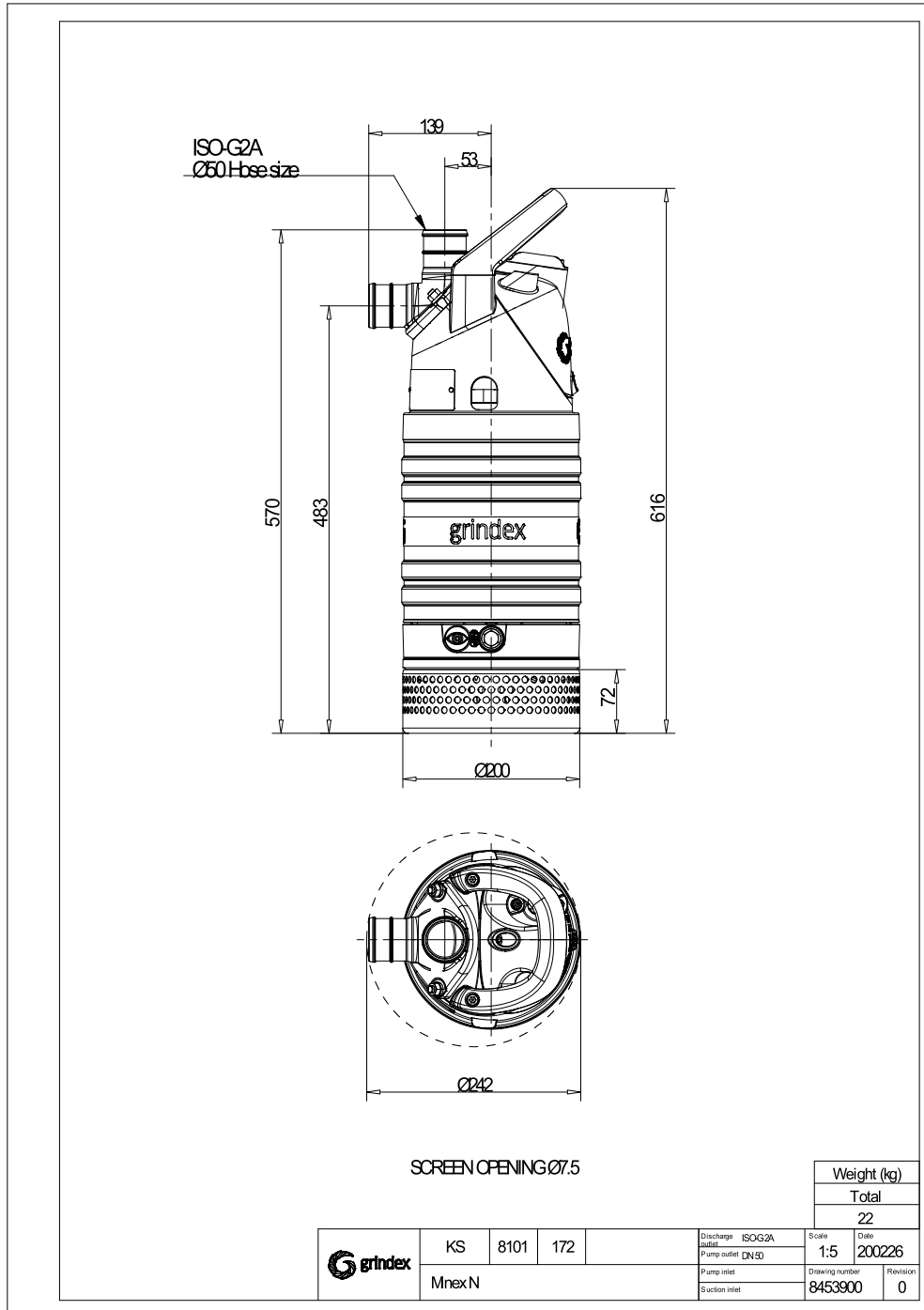
Operating characteristics

Pumps/Systems	Flow	Tryk	Akselkraft	Flow	Tryk	Akselkraft	Hydr.eff.	Specifik energi	NPSHr
---------------	------	------	------------	------	------	------------	-----------	-----------------	-------

Projekt	Xylect-20776517	Udført af	Michael Jersborg	Opdateret	6/27/2023
Blok		Oprettet	6/27/2023		

8101.172 Minex Lite 3~

Dimensions tegning



Projekt	Xylect-20776517	Udført af	Michael Jersborg	Opdateret	6/27/2023
Blok		Oprettet	6/27/2023		